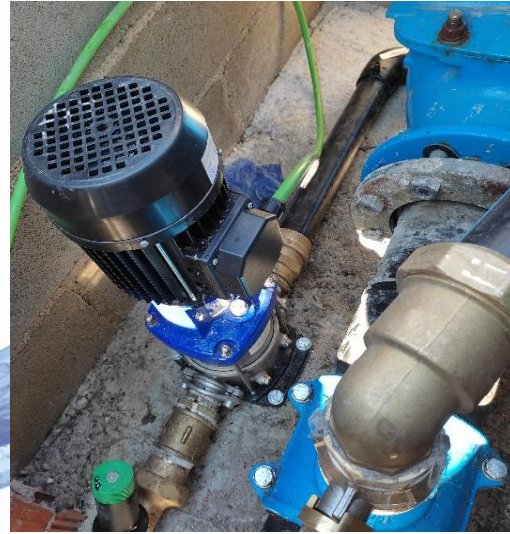







INSTALLATION EXAMPLE: ALTAFULLA (SPAIN)



GENERAL INFORMATION

-  ALTAFULLA (SPAIN)
-  PRESSURE DROP: 43 METERS
-  FLOW: 2,7 LITERS/SECOND
-  GENERATED POWER: 310W
-  SELF-CONSUMPTION BATTERY CHARGING TURBINE

BACKGROUND

The client to whom we have already installed one of our Microbat turbines on previous occasions, contacts us since he has a pressure reducing valve and intends to generate energy to power an ornamental fountain. It so happens that energy consumption will occur while the water circulates through the pipe, which makes the turbine the best solution compared to others such as the installation of photovoltaic panels.

THE SOLUTION

Thanks to the installation of the turbine in parallel to the existing pressure reducing valve, it was possible to generate enough energy to power the source and the remote control system to be able to visualize the operating parameters in real time. In addition, thanks to the proposed installation scheme, the installation will work autonomously, diverting the flow peaks through the existing reducing valve, adapting the turbine at all times to the pressure jump set in the reducing valve.